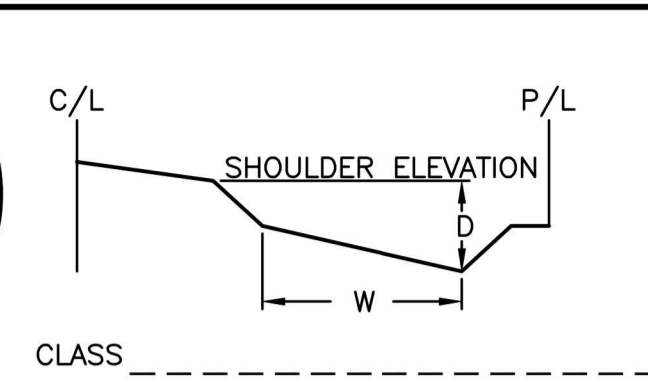
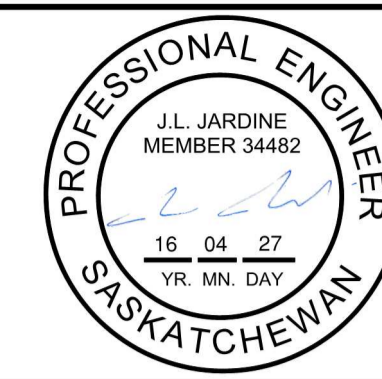


Association of Professional Engineers & Geoscientists of Saskatchewan
CERTIFICATE OF AUTHORIZATION
Parsons Inc.
 Number 21015
 Permission to Consult held by:
 Discipline Sk. Reg. No. Signature
 Civil Engineering 34482

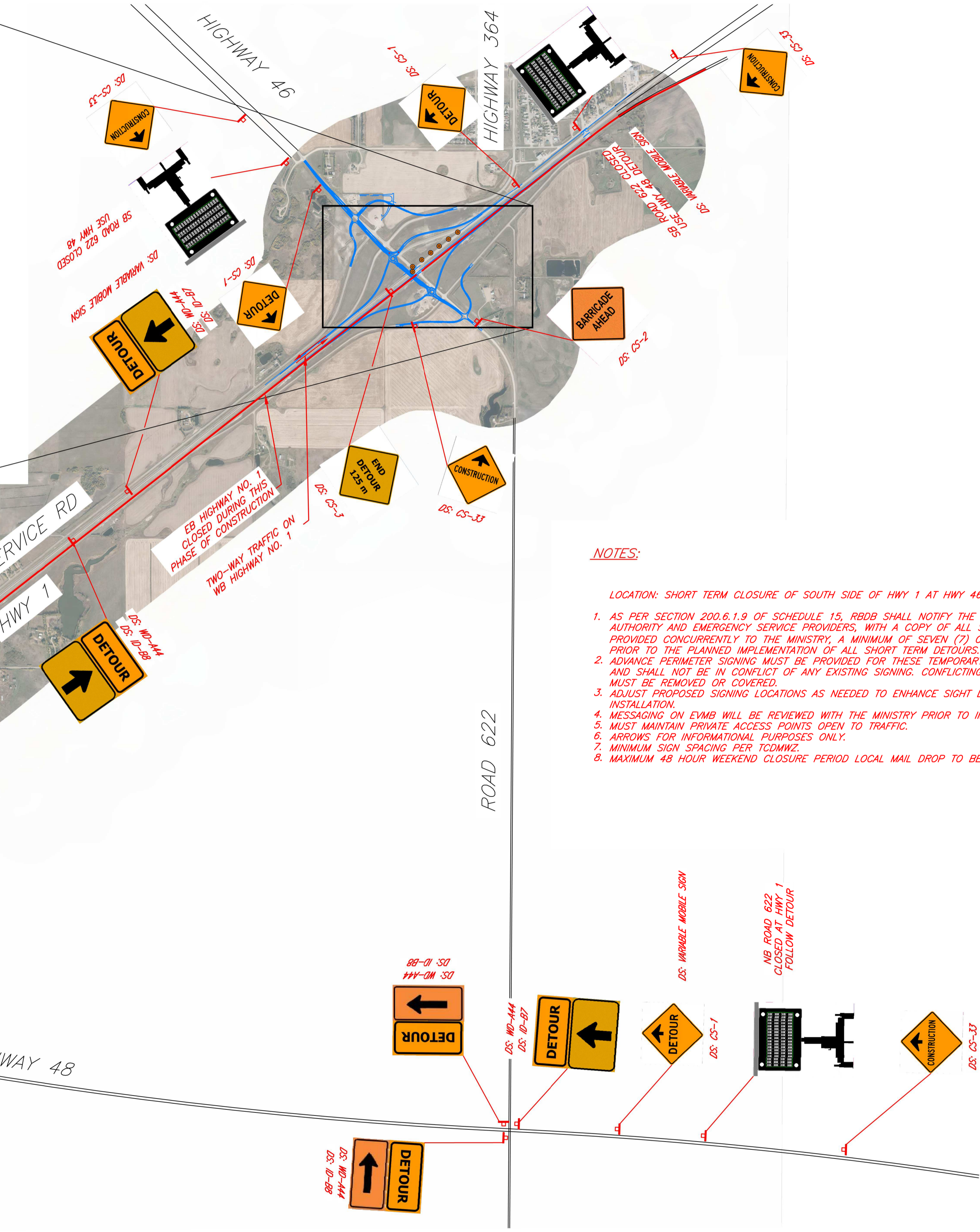
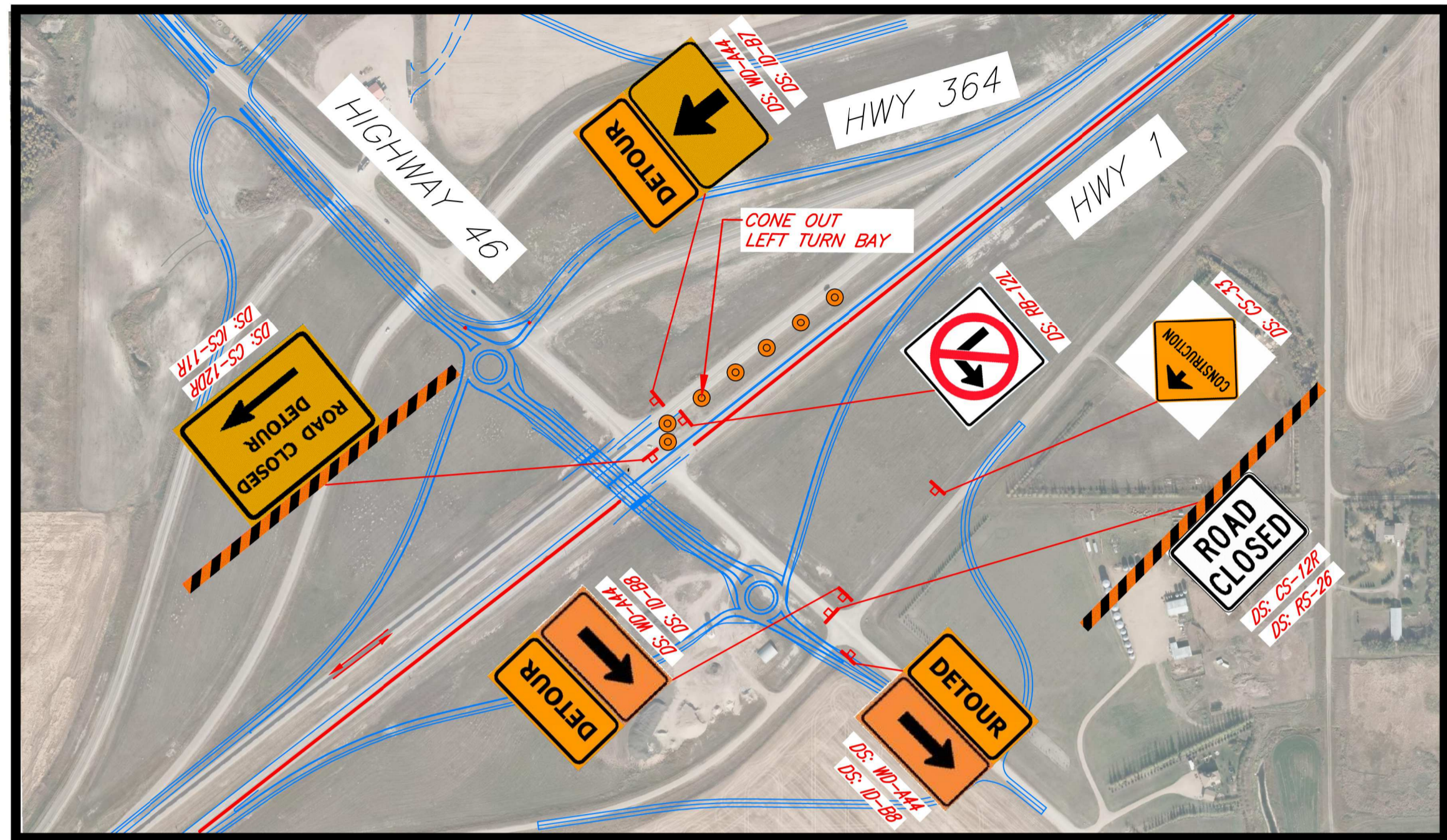


REGINA BYPASS
DESIGN BUILDERS
PARSONS

Government of Saskatchewan
 FULL SIZE SCALE (m)
 NTS

REVISIONS		CS	CS-001-08-00	TAB NO	8-S5-421
NO	DATE	SIGNATURE	PHOTO DATE	SHEET	
A	25MAR2016	N. SAWAGED			25-MAR-2016
FINAL DESIGN DEVELOPMENT					
0	31MAR2016	J. JARDINE			25-MAR-2016
CONSTRUCTION DOCUMENT					

DETOUR SIGNING BLOCK 6
REGINA BYPASS - SEGMENT 5
TRAFFIC ACCOMMODATION PLAN
HIGHWAY 46 SOUTH SIDE CLOSURE



NOTES:

- LOCATION: SHORT TERM CLOSURE OF SOUTH SIDE OF HWY 1 AT HWY 46 INTERSECTION.
1. AS PER SECTION 200.6.1.9 OF SCHEDULE 15, RBDB SHALL NOTIFY THE RELEVANT LOCAL AUTHORITY AND EMERGENCY SERVICE PROVIDERS, WITH A COPY OF ALL SUCH NOTICES PROVIDED CONCURRENTLY TO THE MINISTRY, A MINIMUM OF SEVEN (7) CALENDAR DAYS PRIOR TO THE PLANNED IMPLEMENTATION OF ALL SHORT TERM DETOURS.
 2. ADVANCE PERIMETER SIGNING MUST BE PROVIDED FOR THESE TEMPORARY CLOSURES, AND SHALL NOT BE IN CONFLICT OF ANY EXISTING SIGNING. CONFLICTING SIGNING MUST BE REMOVED OR COVERED.
 3. ADJUST PROPOSED SIGNING LOCATIONS AS NEEDED TO ENHANCE SIGHT DISTANCE, AND INSTALLATION.
 4. MESSAGING ON EVMB WILL BE REVIEWED WITH THE MINISTRY PRIOR TO IMPLEMENTATION.
 5. MUST MAINTAIN PRIVATE ACCESS POINTS OPEN TO TRAFFIC.
 6. ARROWS FOR INFORMATIONAL PURPOSES ONLY.
 7. MINIMUM SIGN SPACING PER TCDMWZ.
 8. MAXIMUM 48 HOUR WEEKEND CLOSURE PERIOD LOCAL MAIL DROP TO BE PROVIDED.

