

For more information about the Diverging Diamond Interchange, visit reginabypass.ca.
24 Hour Contact Centre 1-844-679-4828

KEY DESIGN ELEMENTS

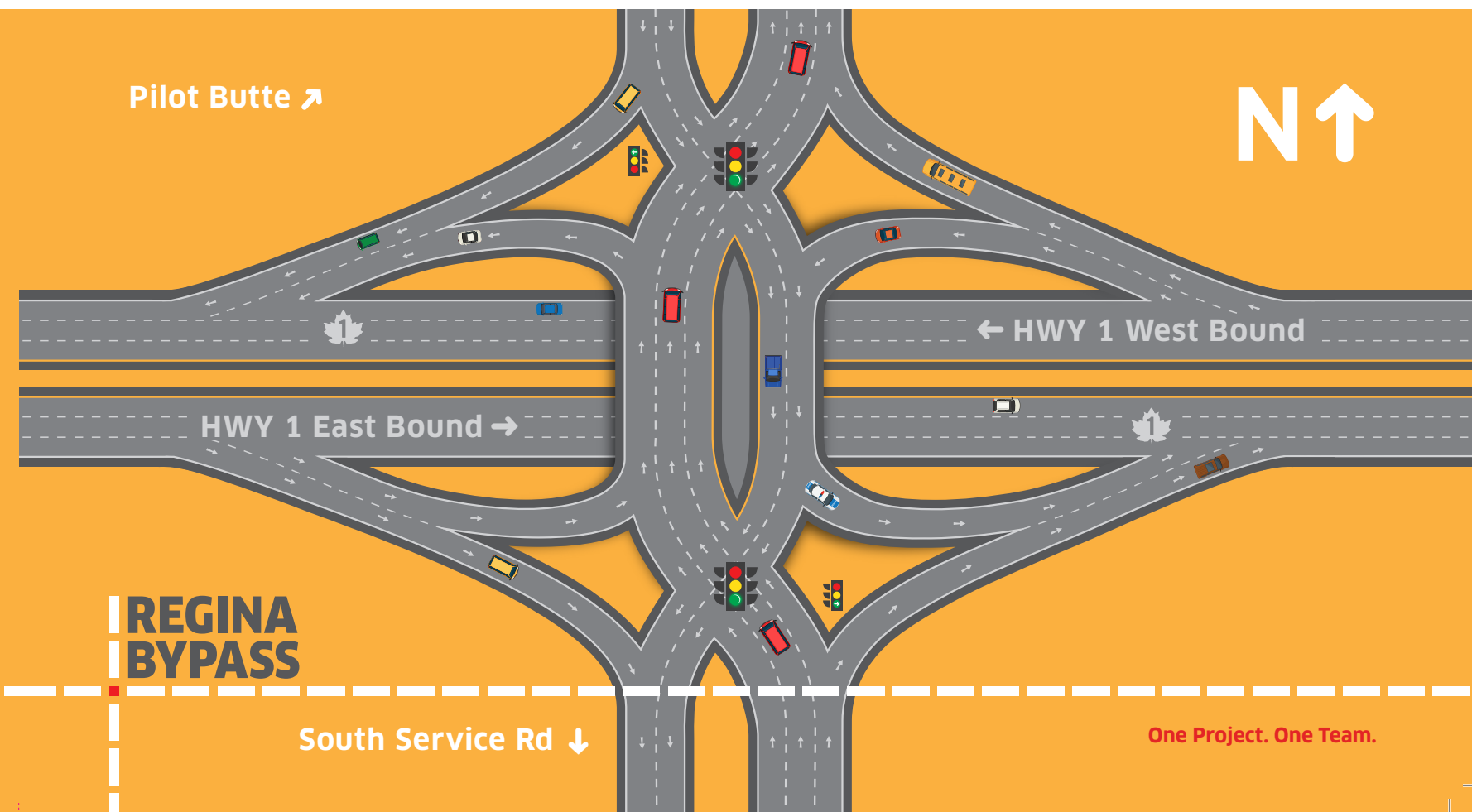
- A Diverging Diamond Interchange can reduce delays and improve safety by eliminating conflicting movements and maintaining the free flow of traffic
- The traffic lights shift traffic to opposite sides of the road to maintain traffic flow and assist with left turns
- Designed to accommodate forecast 2040 traffic volumes
- Well suited to handle a compact footprint where there is a large amount of traffic

REGINA
BYPASS

One Project. One Team.

PILOT BUTTE

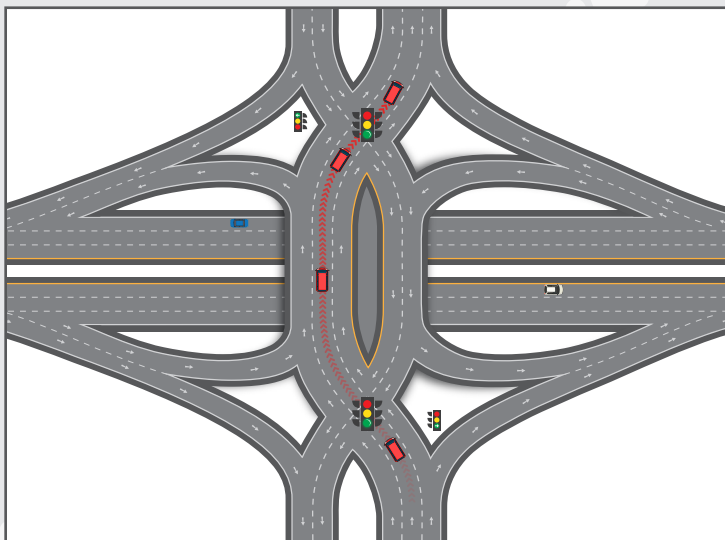
Diverging Diamond Interchange



REGINA
BYPASS

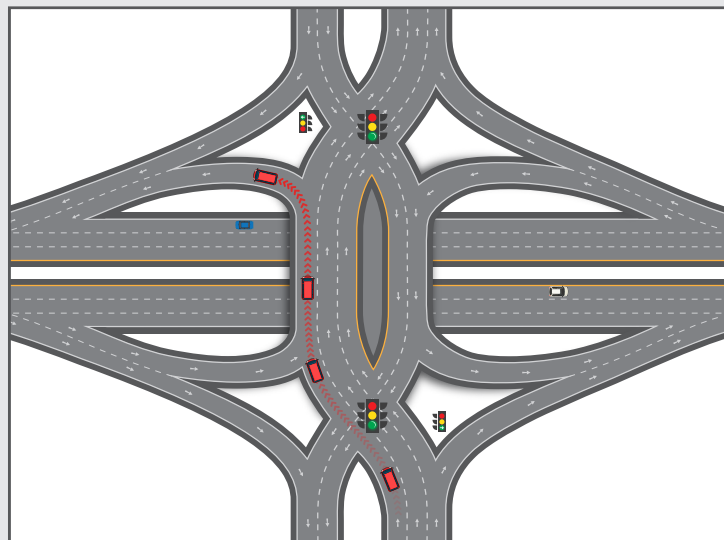
South Service Rd ↓

One Project. One Team.



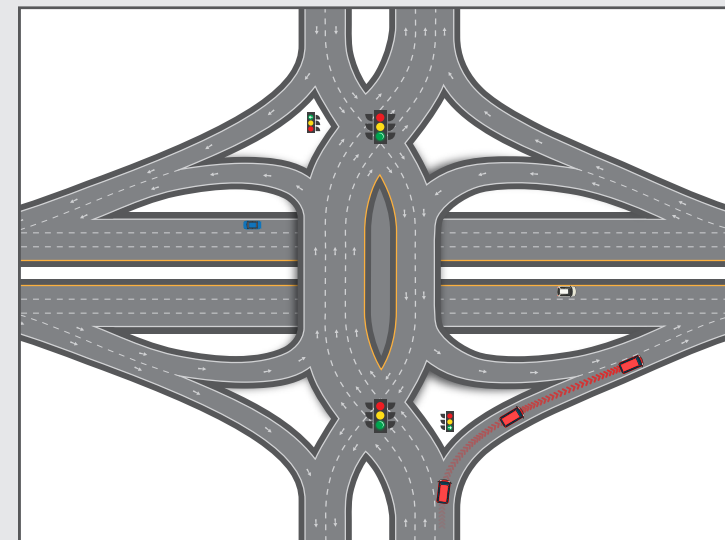
TRAFFIC GOING STRAIGHT

- Watch for lane designation signs to proceed straight
- After the traffic lights, you will be crossing onto the opposite side of the road for a short distance before crossing back at the next traffic lights



TRAFFIC TURNING LEFT

- Watch for lane designation signs for left turns
- After the traffic lights, you will be crossing onto the opposite side of the road for a short distance before making your left turn



TRAFFIC TURNING RIGHT

- Watch for lane designation signs for right turns

DRIVER INFORMATION

- Will reduce delays and improve safety
- Lane designation signs will guide you into the correct lanes for driving
- Reduce speed and be prepared to stop for traffic signals
- Crossover to opposite side, no need to stop or yield if making left hand turn