

ONSITE BIDDING & LIVE INTERNET AUCTION



Since 1950

AUCTION

MAJOR JOB COMPLETION

REGINA, SASKATCHEWAN

Regina Bypass yard :

Highway of Heroes & Ring road, Regina SK, S0G 4G0

Wednesday, July 8, 2020 at 10:00 CT



(2015) Weiler E2850 MTV



(2015) John Deere 844K II

Consignment still accepted

1.833.234.7500 514.916.4656

Follow us



Lyon Canada Auctions

www.lyoncanada.com



Wednesday, July 8, 2020 - 10:00 CT

**Location: Regina Bypass yard : corner West Bypass Highway 1
& Ring road, Regina, SK S0G 4G0**

We are still accepting consignments for this auction.

IMPORTANT NOTE COVID-19 : This part of the auction will be an ONLINE VIRTUAL\INTERNET AUCTION & Live, In-Person event, subject to Health Canada & Saskatchewan reopen plan, Social distancing, Masks required. All people attending must follow Health Canada & Saskatchewan reopen Plan guidelines for social distancing and hand-washing. Thank you in advance for adhering to these requirements, we appreciate your cooperation!

Representatives and phones :

Joël Gauthier : 514.949.7500 / 1.833.234.7500

Charles Gauthier : 514.916.4656 / 1.833.234.7500

Jack Lyon : 315.633.2944 / 1.833.234.7500

Notes for auction :

See www.lyoncanada.com for auction information: lists of equipment, deposits and payment information, financing, wire transfer accounts and taxes.

All items are sold on a "as is, where is, without warranty" basis.

Administration fees payable by buyer :

1,00 \$ to 5 000 \$	=	12,5 % per lot
5 001 \$ to 50 000 \$	=	10,0 % per lot
50 001 \$ to +++ \$	=	5,95 % per lot

INTERNET BIDDING

NOTE: Anybody who wishes to bid by Internet must register **PRIOR to the AUCTION** & offer a **\$ 2500.00 refundable deposit**.

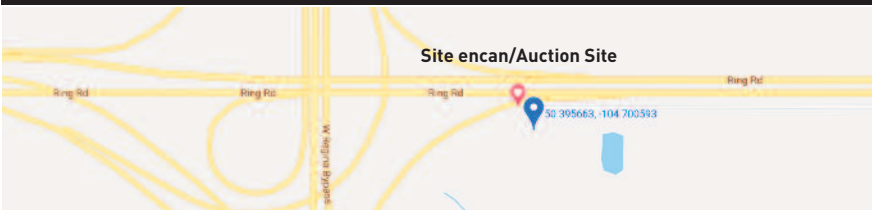
If you are bidding & buying by Internet a 3% additional fee will be charge on each lot up to a maximum of \$ 750 per lot.

An additional 3% administrative fee will be charged for any purchase paid by credit card.

All items bought must be removed **no later than Thursday, July 16, 2020 at 3:00 pm**.

Any lot not removed by July 16, 2020 at 3:00 pm will be subject to a storage fee of \$ 25.00/ day per lot + applicable tax

Directions to sale site, Regina Bypass yard : corner West Bypass Highway 1 & Ring road S0G 4G0



CONTACT US : charles@lyoncanada.com



(2015) John Deere 350G LC



(2015) John Deere 250G LC



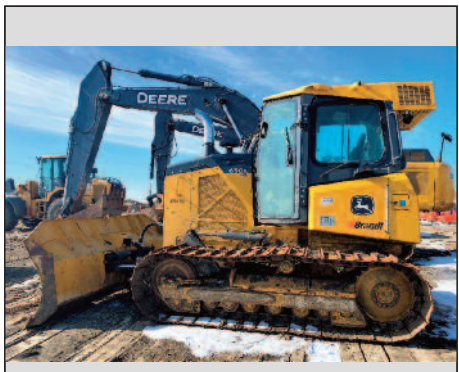
(2015) John Deere 844K II



(2016) John Deere 644K



(2015) John Deere 304K



(2016) John Deere 650K LGP



**Freightliner Bearcat BC502
Asphalt Distributor**



**Inter Maximizer III Asphalt
Distributor**



Mack CXU613 Water truck



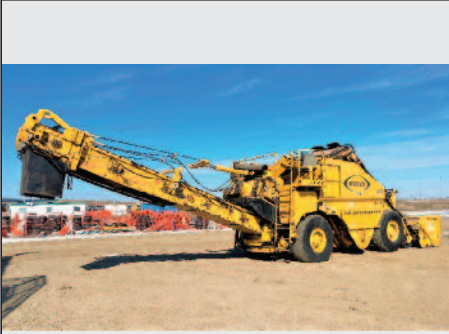
1 of 2 Freightliner FL 70 Water truck



Ram 5500 H/D Service truck



Rosco RB48 Sweeper



(2015) Weiler E2850 Material transfer



(2016) Dynapac CC 7200



1 of 2 (2016) Dynapac CP 2700



1 of 2 (2016) Caterpillar CB 68B



(2016) Caterpillar CC 34B



1 of 2 (2016) High Projects 45 000 liters (skid mounted)



**1 of 11 (2016) Ram 2500 Crew cab
4 x 4**



**1 of 5 (2017) Ram 1500 Crew cab
4 x 4**



**1 of 34 (2017-16) Ram 1500 Crew cab
4 x 4**



(2012) Ford F 250 ext cab 4 x 4



1 of 8 GMC/Chevy 1500 4 x 4



(2012) GMC Savana van



John Deere 772G ripper



(2015) Case SV 185 skid steer



(2015) John Deere 6190R



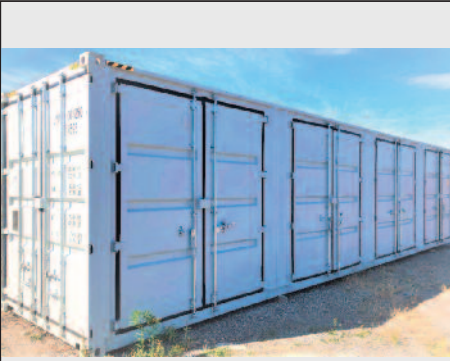
(2017) Continental cargo 24' tandem



(2014) Rainbow Dump trailer 7' x 14'



**2 of 5 PJ Trailers 20' to 22' deckover
& tilt**



(New) 40' Storage container 40' (5 doors)



(New) Qty of 8' steel containers



**(New) 1 of 8 Roll Off containers
20 cu.yd.**



1 of 2 Bobcat 84" broom



**(New) Qty of (30) Mobile Fences kit
& acc.**



**(New) Magnum Gold 4000 Pressure
washer**



**(2016) Quick attach John Deere
350G/250G**



**(2016) Clean up bucket John Deere
350G/250G**



**Qty of (2018-17)Vermac/Solartech
Digital Message Boards**



**Qty of (2018-17) Vermac/Solartech
Radar Boards**



3 of 11 (2017) Solartech arrowboard



**Qty of cones & road signalisation
signs**



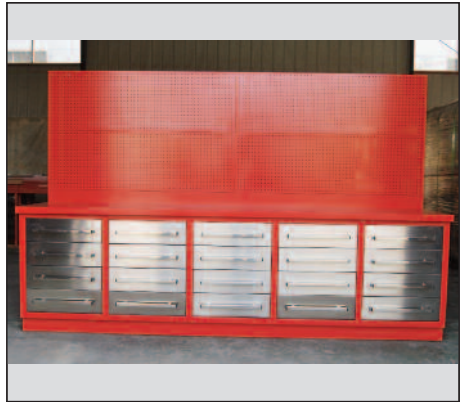
(NEW) Shelter 30' x 40' x 15'



(New) Shelter 30' x 85' x 15'



(New) Portable toilets



(New) Qty of tool box/ work bench



(New) Qty of Iron Gate 20' (2 x 10')



Comair Atlas Copco XAS 185

PRIVATE SALES

We did receive mandate to sell privately the following equipments :

ROCKS TRUCKS:

(8) (2019) Caterpillar 775G (approx 4500 hrs)
(2) (2017) Caterpillar 775G **SOLD**
(4) (2010) Caterpillar 773G
(8) (2010/2008) Caterpillar 773F

ARTICULATED DUMP TRUCKS:

(4) (2015) Volvo A40G
(2) (2012) Volvo A40F **SOLD**
(2) (2011) Volvo A40F **SOLD**

DOZERS:

(2015) Caterpillar D5K2 LGP
(2012) Caterpillar D7E ripper
(2011) John Deere 450J LGP
(2011) Caterpillar D6T LGP **SOLD**

RUBBER TIRED WHEEL LOADERS:

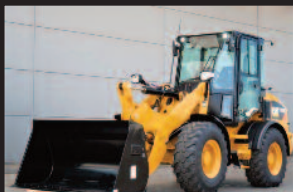
(New) Caterpillar 908 M
(New) Caterpillar 906 M
(2010) Komatsu WA 380-6
(2009) Caterpillar 980H

HYD EXCAVATORS:

(2013) Caterpillar 329 EL
(2012) Caterpillar 349 EL
(2011) Caterpillar 390 DL
(2009) Caterpillar 320 DL
(2008) Caterpillar 385 CL ME

SOLD LOWBOY & ACCESSORIES:

(2017) Kenworth W 900L 16/46 wet kit
(2011) Etnyre RTN60T drop side + beam
3 axles + booster 1 axle + pin on 1 axle
(2011) Etnyre GHD 60T Jeep Dolly +
extension (3 axles)



**FOR MORE
INFORMATIONS**

Joel Gauthier : joel@lyoncanada.com (514) 949-7500
Charles Gauthier: charles@lyoncanada.com (514) 916-4656

FINANCING AVAILABLE



Qty of (2017/16) Ram 2500/1500 pick up & service trucks

OUR NEXT UPCOMING AUCTIONS

June 17 : North Attleborough, Massachusetts

June 19 : Syracuse, New York

June 20 : Las Vegas, Nevada

June 22 : Houston, Texas

June 24 : San Angelo, Texas

June 25 : Toronto, Ontario

June 26 : Roaring Springs, Pennsylvania

June 27 : Leesport, Pennsylvania

July 8 : Regina, Saskatchewan

July 9 : San Diego, California

July 15 : New Waterford, Ohio

July 17 : Akron, Ohio

July 17 : Cleveland, Ohio

July 24 : Syracuse, New York

July 25 : Canastota, New York

August 1 : Attleboro, Massachusetts

CONTACT

Toll Free : 1.833.234.7500

Joël Gauthier : 514.949.7500 joel@lyoncanada.com

Charles Gauthier : 514.916.4656 charles@lyoncanada.com

Jack Lyon : 315.633.2944



Since 1950

WWW.LYONCANADA.COM

Follow us



Lyon Canada Auctions