

Highway 6 & 39 Twinning



DESCRIPTION

The Ministry of Highways plans to twin 14.2 km and resurface 12.8 km of the Highway 6/39 corridor from south of the Regina Bypass to Milestone.

This capital project is part of the Government of Saskatchewan's investment in improving safety and efficiency on key highway corridors.

The estimated cost of this project is \$57M.

Estimated start: May 7, 2024

Scheduled completion: October 31, 2024



TRAFFIC ACCOMMODATION

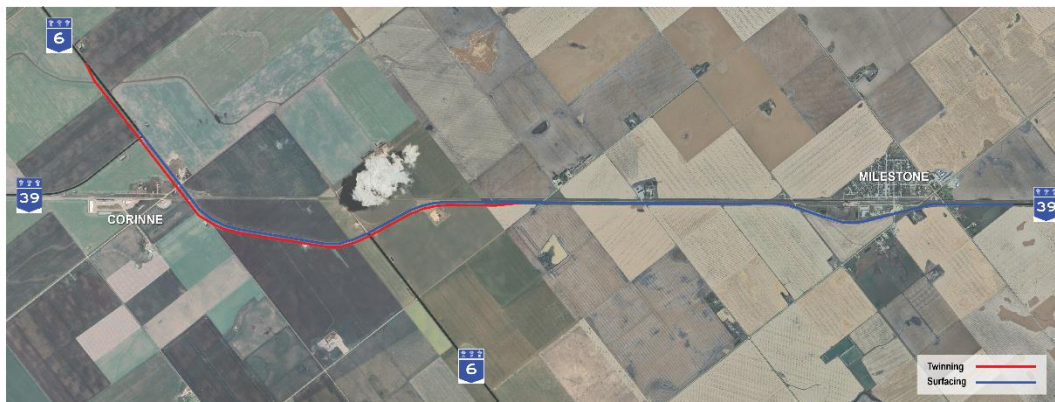
Expect minor delays and disruptions along Highways 6 and 39. Traffic will be reduced to 60 km/hr through the construction zone.

Portions of Highways 6 and 39 will be reduced to one lane through the work zone. Traffic may be stopped for up to 20 minutes.

Information about traffic accommodation will be available on the Highway Hotline.

saskatchewan.ca/highwayhotline.

LOCATION



CONTACT US

Nathan Ruecker, P.Eng.
Second Level Supervisor
KGS Group
306-581-1085
nruecker@ksgroup.com

Michael Smith, P.Eng.
Senior Project Manager
Ministry of Highways
306-787-2881
michael.smith@gov.sk.ca

Herrol Sadler, P.Eng.
Director Construction Delivery
Ministry of Highways
306-787-0386
herrol.sadler@gov.sk.ca